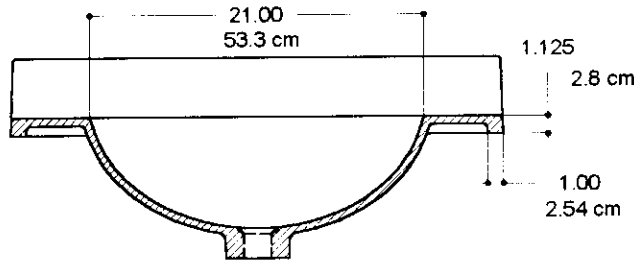


CENTERLINE OF OPTIONAL OVERFLOW SHOWN ABOVE



NOTE

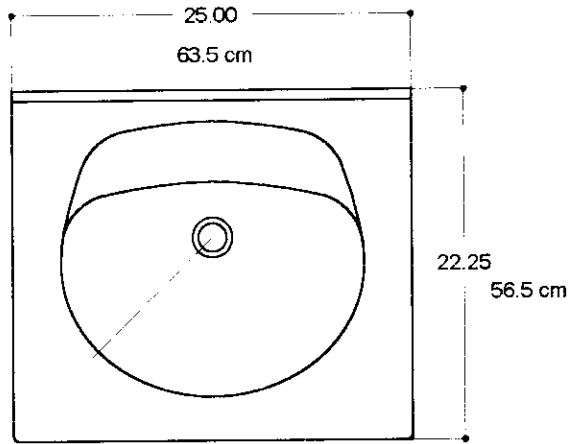
THIS MODULAR MOLD HAS BEEN DESIGNED TO ACCOMMODATE THE HIGHER SHRINKAGE RATE OF A SOLID SURFACE DENSIFIED MATRIX. THE MOLD CAVITY IS LARGER IN CONSEQUENCE AND MANUFACTURERS ARE ADVISED TO VERIFY SUITABILITY OF CASTING A STANDARD SHRINKAGE MATRIX INTO SSV MOLDS.

CAST WEIGHT WILL VARY ACCORDING TO MATERIALS USED. AS AN EXAMPLE, CAST WITH NON GEL COATED GRANATEX 500, THIS PRODUCT WILL WEIGH APPROXIMATELY 26 LBS. (11.8 KG.)

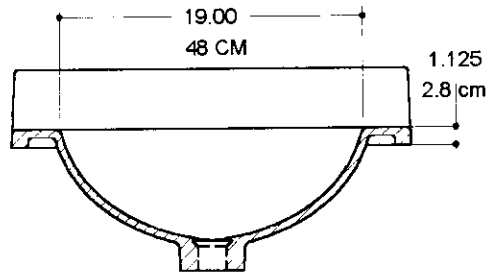
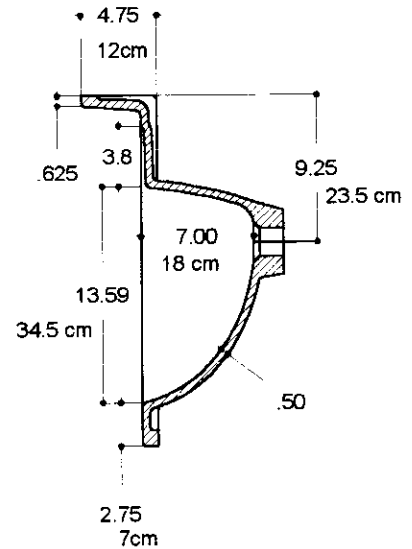
THE ULFF (FEMALE MOLD) IS CONFIGURED TO INCLUDE:-

- a) AN INTEGRAL BACKSPLASH WHICH DOES NOT REQUIRE A DOOR ON THE MALE MOLD.
- b) OPTIONAL OVERFLOW BOSSES. WHEN REQUIRED, THE CASTING MAY BE DRILLED AND AN EXTERNAL OVERFLOW TUBE FITTED.

MOLD PART	CATALOG No.	DESCRIPTION
MALE	20240 M	META 22-SSV-31
FEMALE	402409 M	META ULFF 22-SSV-31
NAME	SOLID SURFACE MODULAR VANITY 22 1/4" X 31" (56.5cm X 78.7cm)	
CAST WEIGHT	SCALE 1" = 1' 0"	DATE 3-6-96 PAGE No. SSV-1



CENTERLINE OF OPTIONAL OVERFLOW SHOWN ABOVE



CAUTION!
 WHEN SPECIFYING THIS 25" SIZE,
 PLEASE NOTE THAT THE BOWL
 OPENING IS SMALLER SIDE TO
 SIDE THAN THE OTHER SIZES OF
 THIS 22" SERIES.

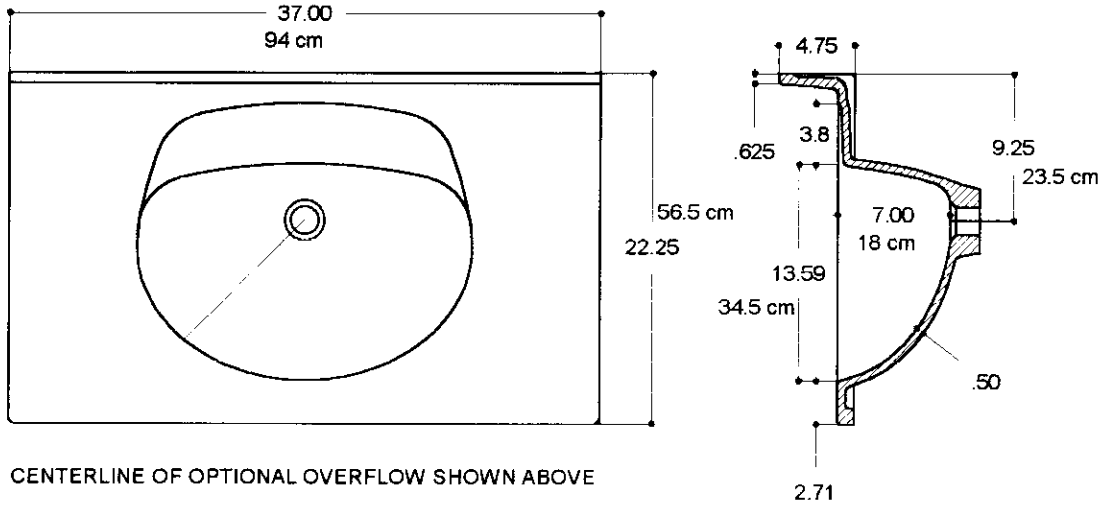
NOTE

THIS MODULAR MOLD HAS BEEN DESIGNED TO ACCOMMODATE THE HIGHER SHRINKAGE RATE OF A SOLID SURFACE DENSIFIED MATRIX. THE MOLD CAVITY IS LARGER IN CONSEQUENCE AND MANUFACTURERS ARE ADVISED TO VERIFY SUITABILITY OF CASTING A STANDARD SHRINKAGE MATRIX INTO SSV MOLDS.

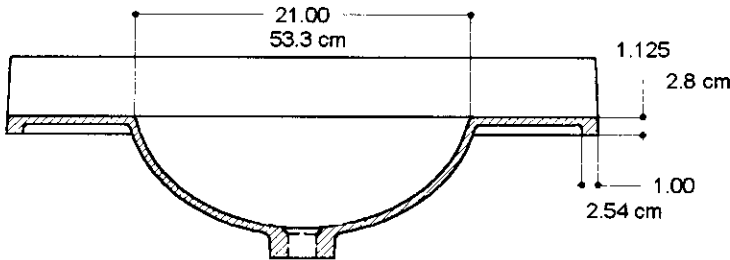
THE ULFF (FEMALE MOLD) IS CONFIGURED TO INCLUDE:-

- a) AN INTEGRAL BACKSPASH WHICH DOES NOT REQUIRE A DOOR ON THE MALE MOLD.
- b) OPTIONAL OVERFLOW BOSSES. WHEN REQUIRED, THE CASTING MAY BE DRILLED AND AN EXTERNAL OVERFLOW TUBE FITTED.

MOLD PART	CATALOG No.	DESCRIPTION
MALE	20242 M	META 22-SSV-25
FEMALE	402429 M	M-ULFF-SSV-25
NAME	SOLID SURFACE MODULAR VANITY 22 1/4" X 25" (56.5cm X 63.5cm)	
CAST WEIGHT	SCALE 1" = 1' 0"	DATE 1-1-97
		PAGE No. SSV-2



CENTERLINE OF OPTIONAL OVERFLOW SHOWN ABOVE



NOTE

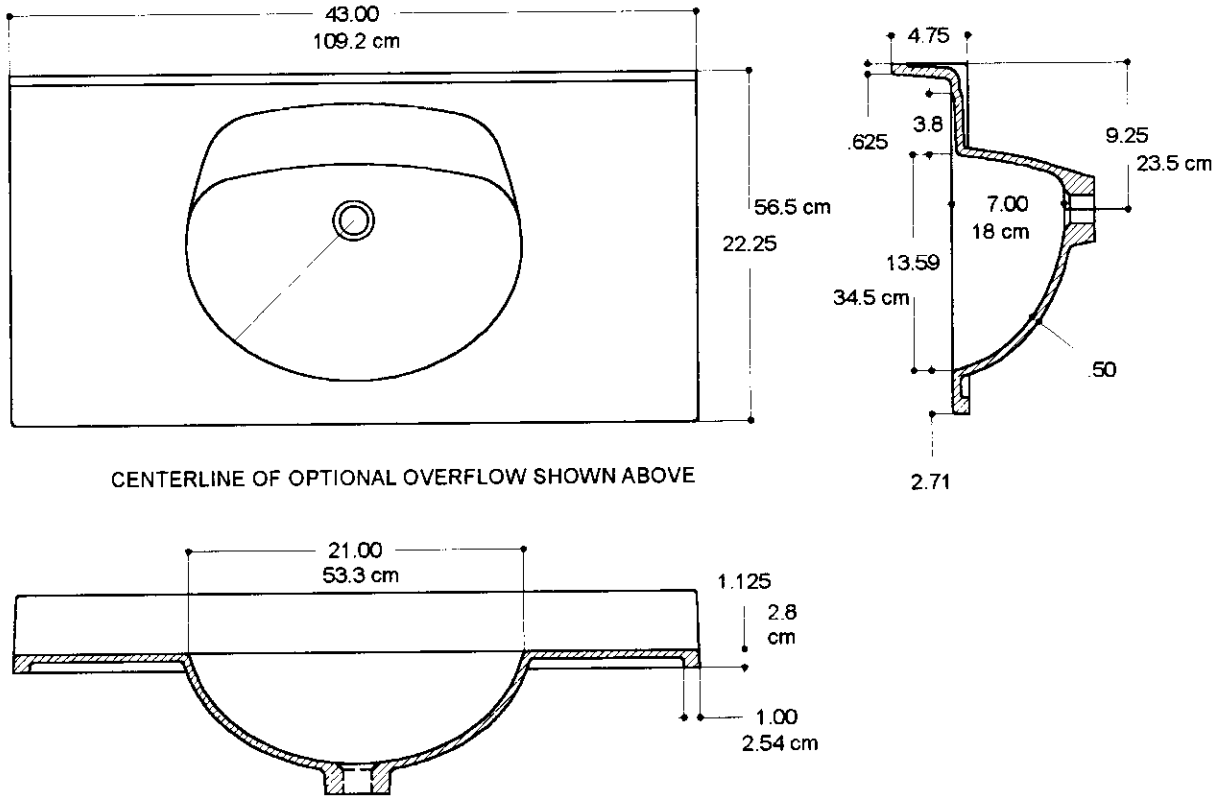
THIS MODULAR MOLD HAS BEEN DESIGNED TO ACCOMMODATE THE HIGHER SHRINKAGE RATE OF A SOLID SURFACE DENSIFIED MATRIX. THE MOLD CAVITY IS LARGER IN CONSEQUENCE AND MANUFACTURERS ARE ADVISED TO VERIFY SUITABILITY OF CASTING A STANDARD SHRINKAGE MATRIX INTO SSV MOLDS.

CAST WEIGHT WILL VARY ACCORDING TO MATERIALS USED. AS AN EXAMPLE, CAST WITH NON GEL COATED GRANATEX 500, THIS PRODUCT WILL WEIGH APPROXIMATELY _____

THE ULFF (FEMALE MOLD) IS CONFIGURED TO INCLUDE:-

- a) AN INTEGRAL BACKSPLASH WHICH DOES NOT REQUIRE A DOOR ON THE MALE MOLD.
- b) OPTIONAL OVERFLOW BOSSES. WHEN REQUIRED, THE CASTING MAY BE DRILLED AND AN EXTERNAL OVERFLOW TUBE FITTED.

MOLD PART	CATALOG No.	DESCRIPTION
MALE	20243 M	META 22-SSV-37
FEMALE	402439 M	META ULFF 22-SSV-37
NAME	SOLID SURFACE MODULAR VANITY 22 1/4" X 37" (56.5cm X 96.5cm)	
CAST WEIGHT	SCALE 1" = 1' 0"	DATE 3-18-97 PAGE No. SSV-3



CENTERLINE OF OPTIONAL OVERFLOW SHOWN ABOVE

NOTE

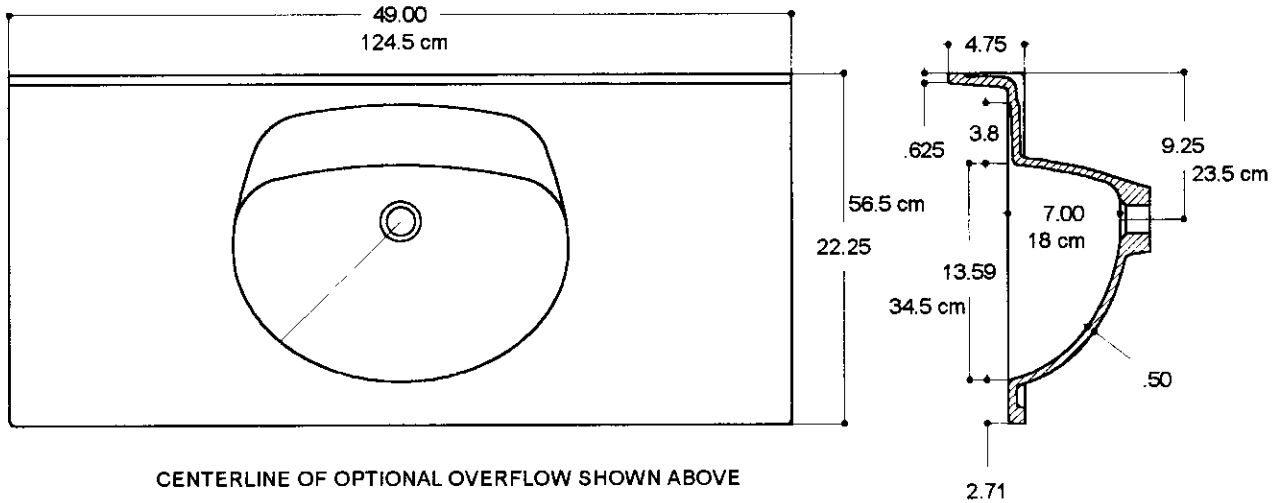
THIS MODULAR MOLD HAS BEEN DESIGNED TO ACCOMMODATE THE HIGHER SHRINKAGE RATE OF A SOLID SURFACE DENSIFIED MATRIX. THE MOLD CAVITY IS LARGER IN CONSEQUENCE AND MANUFACTURERS ARE ADVISED TO VERIFY SUITABILITY OF CASTING A STANDARD SHRINKAGE MATRIX INTO SSV MOLDS.

CAST WEIGHT WILL VARY ACCORDING TO MATERIALS USED. AS AN EXAMPLE, CAST WITH NON GEL COATED GRANATEX 500, THIS PRODUCT WILL WEIGH APPROXIMATELY _____

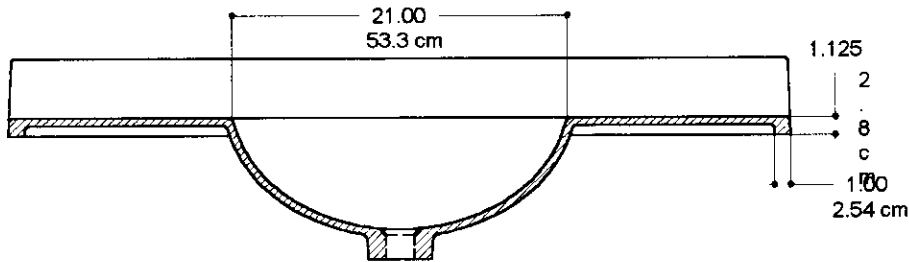
THE ULFF (FEMALE MOLD) IS CONFIGURED TO INCLUDE:-

- a) AN INTEGRAL BACKSPLASH WHICH DOES NOT REQUIRE A DOOR ON THE MALE MOLD.
- b) OPTIONAL OVERFLOW BOSSES. WHEN REQUIRED, THE CASTING MAY BE DRILLED AND AN EXTERNAL OVERFLOW TUBE FITTED.

MOLD PART	CATALOG No.	DESCRIPTION
MALE	20244 M	META 22-SSV-43
FEMALE	402449 M	META ULFF 22-SSV-43
NAME	SOLID SURFACE MODULAR VANITY 22 1/4" X43" (56.5cm X109.2cm)	
CAST WEIGHT	SCALE 1" = 1' 0"	DATE 3-18-97 PAGE No. SSV-4



CENTERLINE OF OPTIONAL OVERFLOW SHOWN ABOVE



NOTE

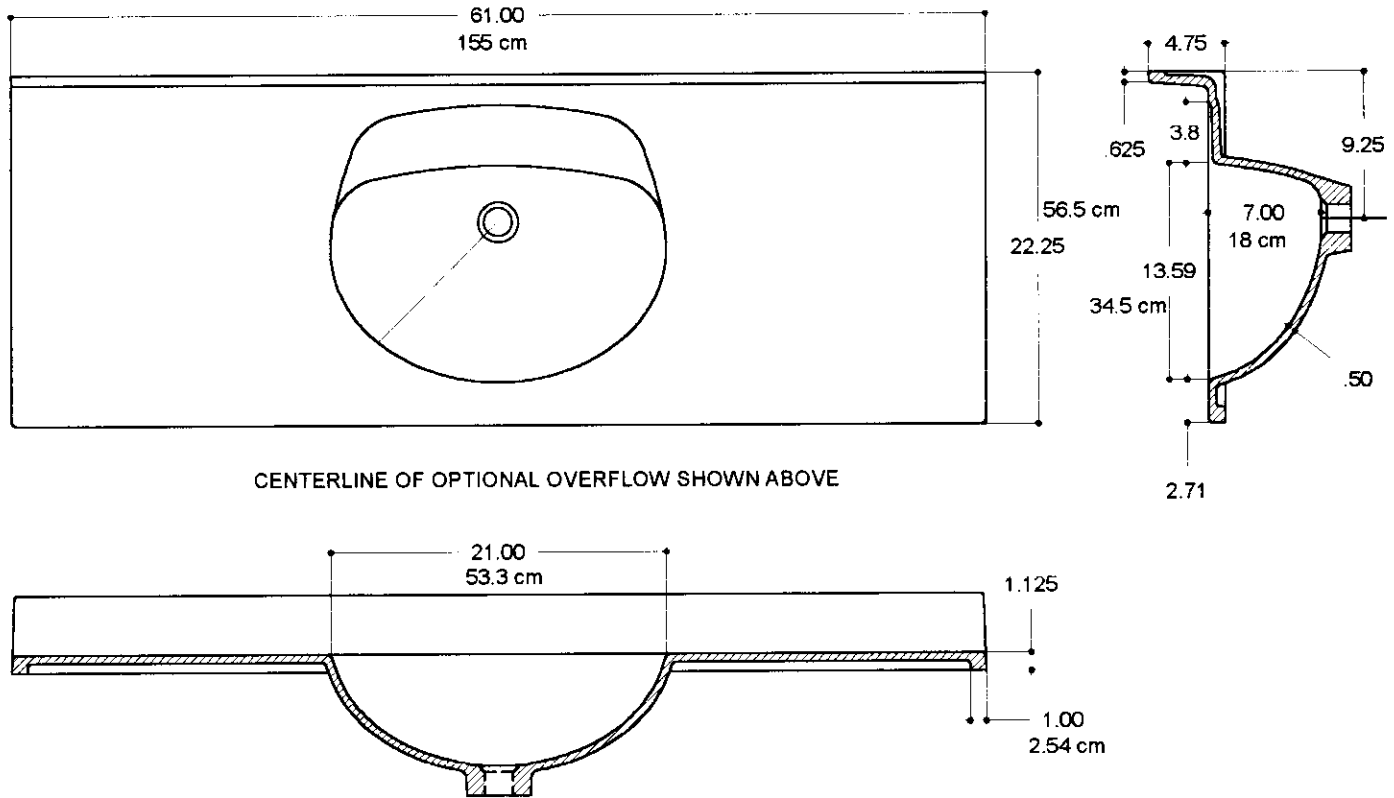
THIS MODULAR MOLD HAS BEEN DESIGNED TO ACCOMMODATE THE HIGHER SHRINKAGE RATE OF A SOLID SURFACE DENSIFIED MATRIX. THE MOLD CAVITY IS LARGER IN CONSEQUENCE AND MANUFACTURERS ARE ADVISED TO VERIFY SUITABILITY OF CASTING A STANDARD SHRINKAGE MATRIX INTO SSV MOLDS.

CAST WEIGHT WILL VARY ACCORDING TO MATERIALS USED. AS AN EXAMPLE, CAST WITH NON GEL COATED GRANATEX 500, THIS PRODUCT WILL WEIGH APPROXIMATELY _____

THE ULFF (FEMALE MOLD) IS CONFIGURED TO INCLUDE:-

- a) AN INTEGRAL BACKSPASH WHICH DOES NOT REQUIRE A DOOR ON THE MALE MOLD.
- b) OPTIONAL OVERFLOW BOSSES. WHEN REQUIRED, THE CASTING MAY BE DRILLED AND AN EXTERNAL OVERFLOW TUBE FITTED.

MOLD PART	CATALOG No.	DESCRIPTION
MALE	20245 M	META 22-SSV-49
FEMALE	402459 M	META ULFF 22-SSV-49
NAME	SOLID SURFACE MODULAR VANITY 22 1/4" X 49" (56.5cm X 124.5cm)	
CAST WEIGHT	SCALE 1" = 1' 0"	DATE 3-6-96 PAGE No. SSV-5



CENTERLINE OF OPTIONAL OVERFLOW SHOWN ABOVE

NOTE

THIS MODULAR MOLD HAS BEEN DESIGNED TO ACCOMMODATE THE HIGHER SHRINKAGE RATE OF A SOLID SURFACE DENSIFIED MATRIX. THE MOLD CAVITY IS LARGER IN CONSEQUENCE AND MANUFACTURERS ARE ADVISED TO VERIFY SUITABILITY OF CASTING A STANDARD SHRINKAGE MATRIX INTO SSV MOLDS.

CAST WEIGHT WILL VARY ACCORDING TO MATERIALS USED. AS AN EXAMPLE, CAST WITH NON GEL COATED GRANATEX 500, THIS PRODUCT WILL WEIGH APPROXIMATELY _____

THE ULFF (FEMALE MOLD) IS CONFIGURED TO INCLUDE:-

- a) AN INTEGRAL BACKSPLASH WHICH DOES NOT REQUIRE A DOOR ON THE MALE MOLD.
- b) OPTIONAL OVERFLOW BOSSES. WHEN REQUIRED, THE CASTING MAY BE DRILLED AND AN EXTERNAL OVERFLOW TUBE FITTED.

MOLD PART	CATALOG No.	DESCRIPTION
MALE	20246 M	META 22-SSV-61
FEMALE	402469 M	META ULFF 22-SSV-61
NAME	SOLID SURFACE MODULAR VANITY 22 1/4" X 61" (56.5cm X 155cm)	
CAST WEIGHT	SCALE 1" = 1' 0"	DATE 3-18-97 PAGE No. SSV-6